

DRAFT

# Arkansas All-Payer Claims Database Project

## Workgroup Session



All-Payer Claims  
Database

October 13, 2014

ADMINISTERED BY **ACHI**  
ARKANSAS CENTER FOR HEALTH IMPROVEMENT

# Agenda

- Welcome and introductions
- Feedback from the APCD Advisory Committee meeting
- Website updates and demonstration
- Reporting Regions
- Version 1.0 procedure review
- Data Release protocol
- APCD status update
- Next steps

# Feedback from workgroups

## Vision

Empowering Arkansans to drive, deliver, and seek out value in the health system.

## Mission

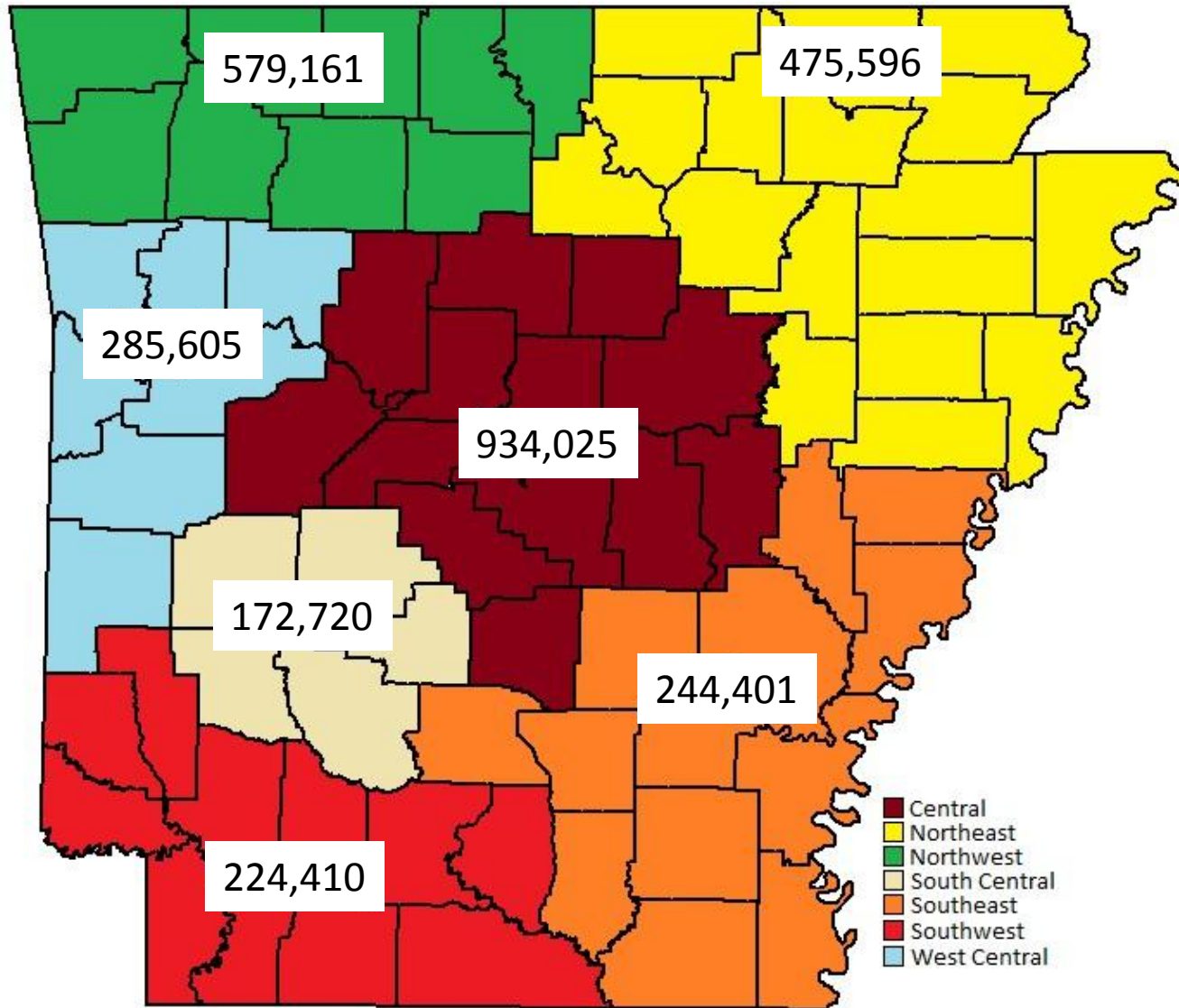
Serve as a trusted and timely source of dynamic information to guide meaningful action to improve health, enhance quality, and lower cost.

## Website Updates/Demonstration

- **APCD Wireframe**
  - <http://dev.achi.net/ARAPCD/>
- **Other APCD Websites**
  - Colorado: [CO Medical Price Compare](#)
  - Maine:  
<https://mhdo.maine.gov/healthcost2014/CostCompare>

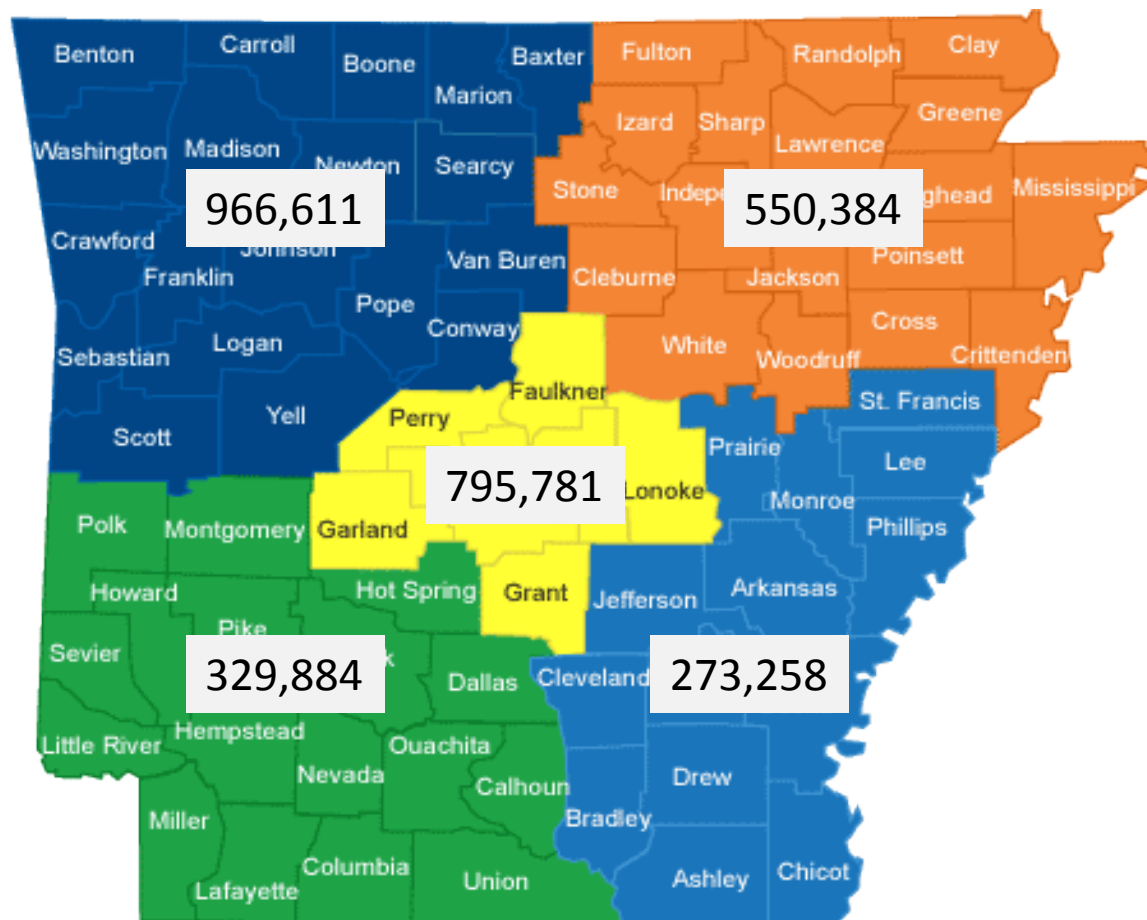
DRAFT

# Arkansas Marketplace Regions



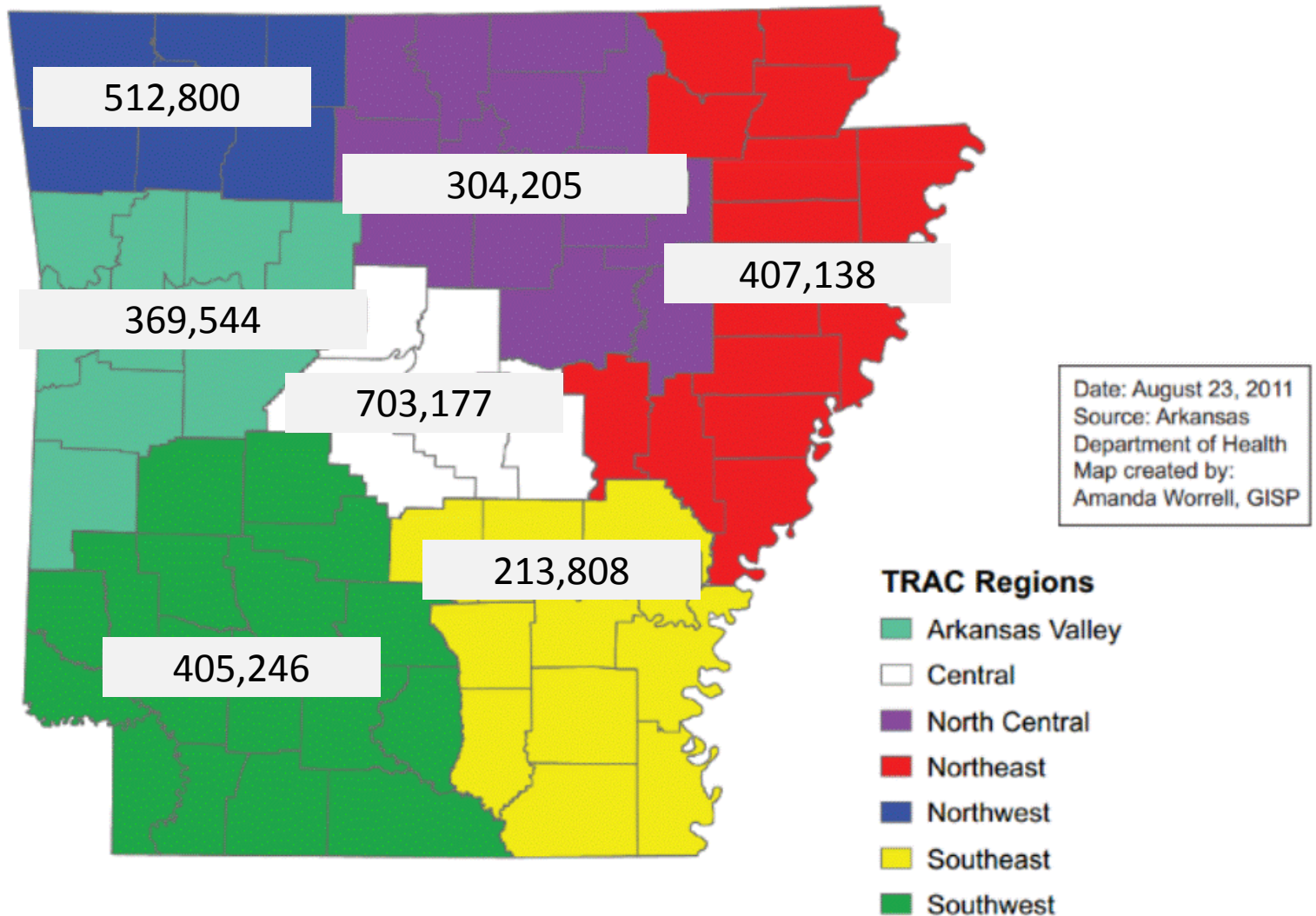
DRAFT

# Arkansas Public Health Regions



DRAFT

# Arkansas Trauma Regions





# Version 1.0 Procedure Review

Top EBD Procedures by Patient Count			
Age Group	Procedure Code	Procedure Description	Patient Count
<b>18-44 years</b>	99213	Office/outpatient visit (15 min visit)	31,780
	85025	Blood work	20,589
	99214	Office/outpatient visit (25 min visit)	19,003
	36415	Blood draw	17,743
	88175	Cervical or vaginal cytopathology	15,416
<b>45-64 years</b>	99213	Office/outpatient visit (15 min visit)	47,353
	80061	Cervical or vaginal cytopathology	37,728
	99214	Office/outpatient visit (25 min visit)	36,448
	85025	Blood work	35,829
	36415	Blood draw	31,821
<b>65+ years</b>	99213	Office/outpatient visit (15 min visit)	18,472
	36415	Blood draw	16,921
	99214	Office/outpatient visit (25 min visit)	16,864
	85025	Blood work	16,510
	80061	Cholesterol Check	15,797

Methodology: Simple count of HDI person identifier (PID) by age and primary procedure code where only the primary procedure code was present.

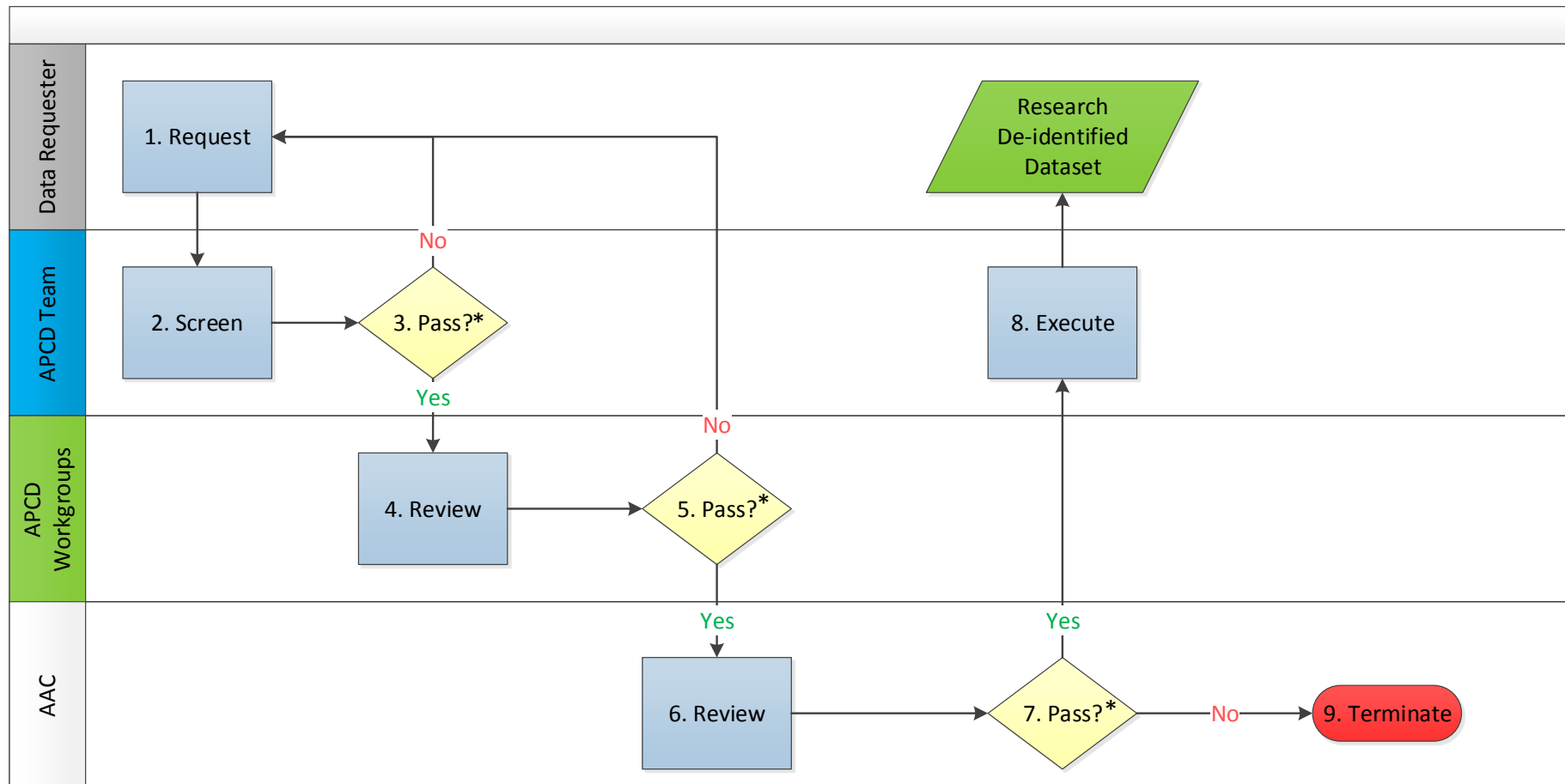


# Version 1.0 Procedure Review

Top EBD Procedures by Total Cost				
Age Group	Procedure Code	Procedure Description	Patient Count	Total Cost
18-44 years	99213	Office/outpatient visit (15 min visit)	31,780	\$ 7,541,697.97
	99214	Office/outpatient visit (25 min visit)	19,003	\$ 5,187,108.84
	59400	Routine maternity care including vaginal delivery	1,795	\$ 3,889,207.18
	59510	Routine obstetric care including antepartum and postpartum	1,234	\$ 3,129,918.54
	99395	Preventive medical services 18-36 years	12,882	\$ 2,559,669.89
45-64 years	99213	Office/outpatient visit (15 min visit)	47,353	\$ 14,957,909.79
	99214	Office/outpatient visit (25 min visit)	36,448	\$ 14,141,484.49
	99396	Preventive medical services, ages 40-64	25,652	\$ 6,479,504.51
	97110	Physical therapy	8,367	\$ 5,431,186.99
	45378	Colonoscopy	4,774	\$ 4,187,339.10
65+ years	99214	Office/outpatient visit (25 min visit)	16,864	\$ 4,422,912.38
	99213	Office/outpatient visit (15 min visit)	18,472	\$ 4,334,026.95
	V5257	Hearing Aid	1,055	\$ 2,745,981.33
	66984	Cataract removal	2,055	\$ 1,554,618.43
	J9310	Rituximab injection for Rheumatoid arthritis	87	\$ 1,531,068.68

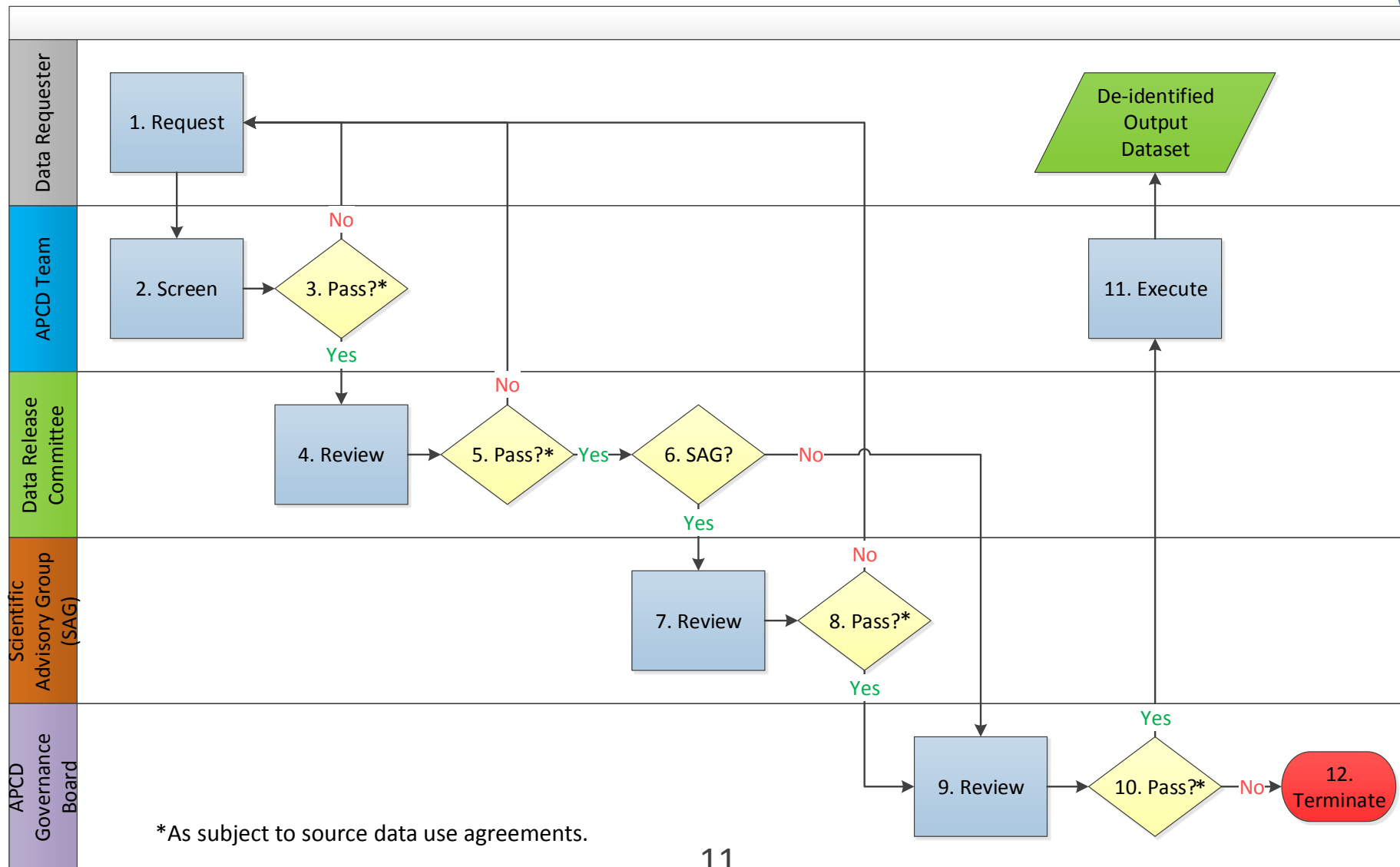
Methodology: Sum of amount paid by patient and amount paid by plan unique HDI person identifier (PID) by age and primary procedure where only the primary procedure code was present.

# Data Release Process Prior to Governance Board



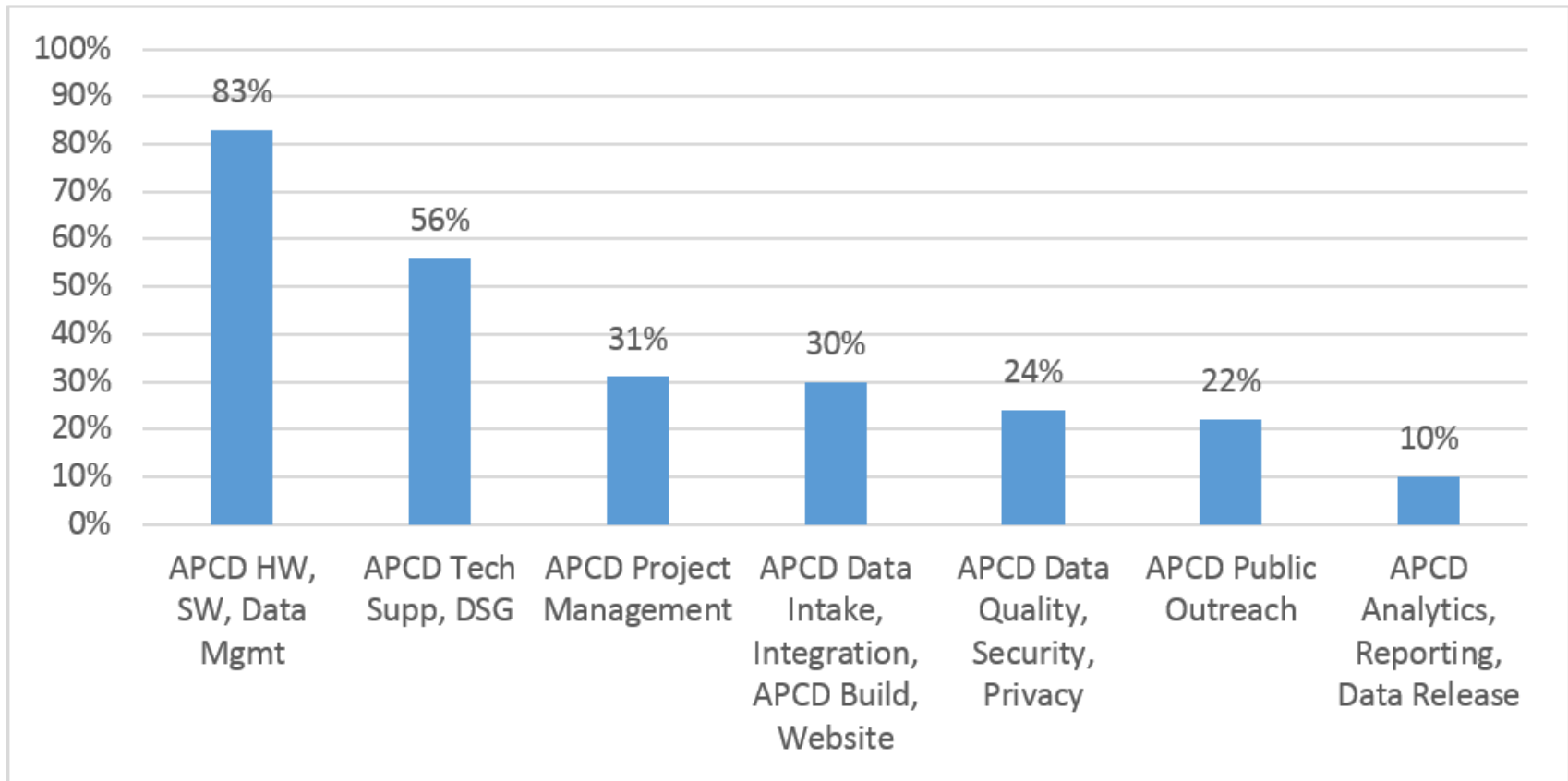
\*As subject to source data use agreements.

# DRAFT Data Release Process with Governance Board



# APCD Status Update

- Project area progress



# Next Steps