



ARKANSAS MEDICARE PROVIDER EPISODE REPORT: BILATERAL CATARACT REMOVAL WITH LENS IMPLANT

November 20, 2015

T. Mac Bird Ph.D., APCD Analytic Lead
Kenley Money, APCD Director

Version 1.0.2015

ACHI is a nonpartisan, independent, health policy center that serves as a catalyst to improve the health of Arkansans.



1401 West Capitol Avenue
Suite 300, Victory Building
Little Rock, Arkansas 72201
www.achi.net

ANALYTIC RESULTS

Mean episode costs stratified by surgeon are depicted in Figure 1 and ranged from \$3,503 to \$4,334. In 2013, surgical episode volume ranged from 10 cases (minimum threshold) to 655 cases. Vertical bars in Figure 1 represent the mean of each surgeon's episode cost distribution. Surgeons are sorted from lowest to highest mean episode cost. Episode volume is represented for each surgeon on the x-axis.

The correlation between mean episode cost and episode volume is illustrated in Figure 2. There is a statistically significant positive correlation between mean episode cost and episode volume ($p < 0.05$).

Figure 1. Episode Mean Cost Stratified by Surgeon

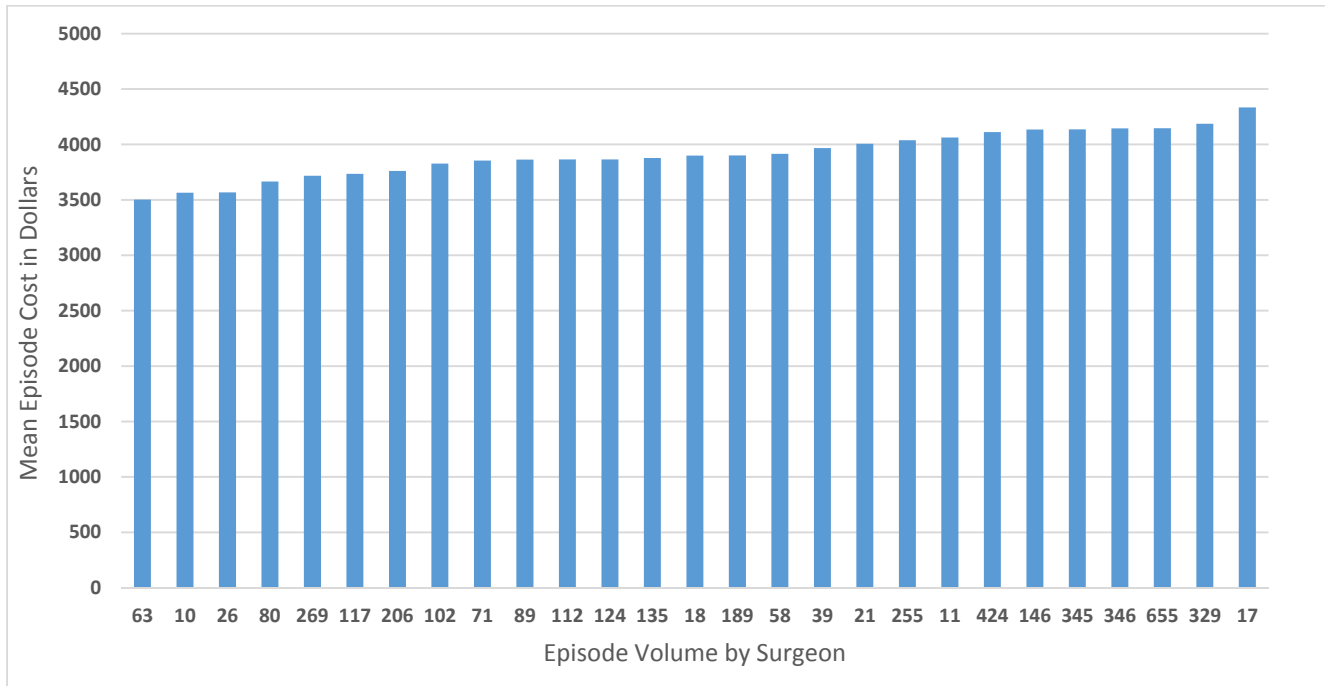
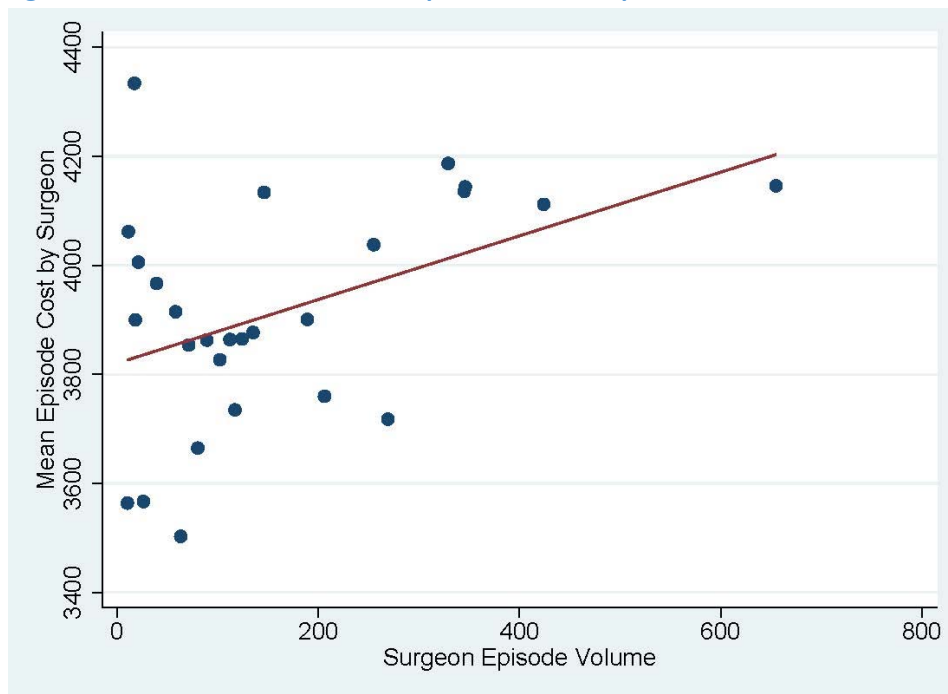


Figure 2. Correlation between Mean Episode Cost and Episode Volume



Surgeon episode cost variability, represented by the standard deviation of each surgeon's episode cost distribution, ranged from \$474 to \$2,442 as illustrated in Figure 3. Episode volume is represented for each surgeon on the x-axis.

Figure 4 illustrates the statistically significant positive correlation between surgeon episode cost variability and episode volume ($p < 0.05$).

Figure 3. Episode Cost Standard Deviation by Surgeon

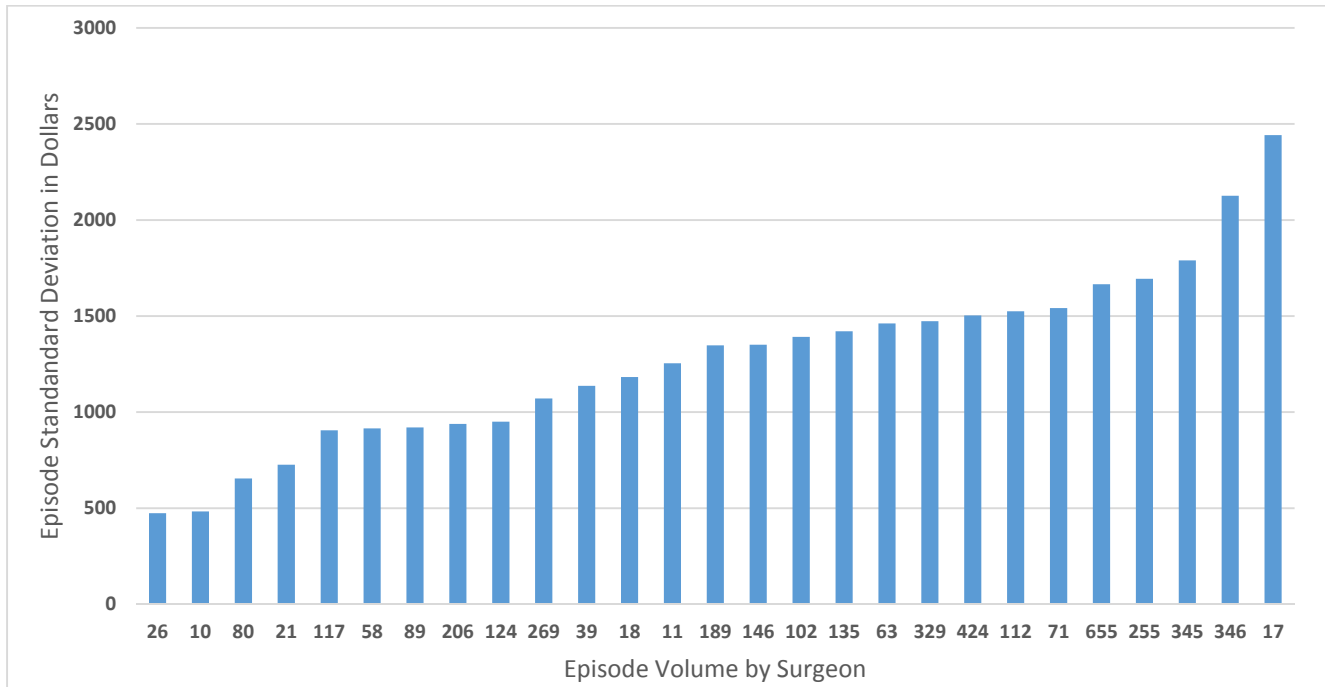


Figure 4. Correlation between Episode Cost Standard Deviation and Episode Volume

