

# The Arkansas All-Payer Claims Database (APCD) Data Validation Reporting

January 2026



**H**EALTHCARE  
**T**RANSPARENCY  
**I**NIITIATIVE

# Introduction

This packet introduces the **data validation process**, **data validation summary report**, **file analysis report** and **data validation detail report** to submitting entities (SEs). These are provided with each data submission.

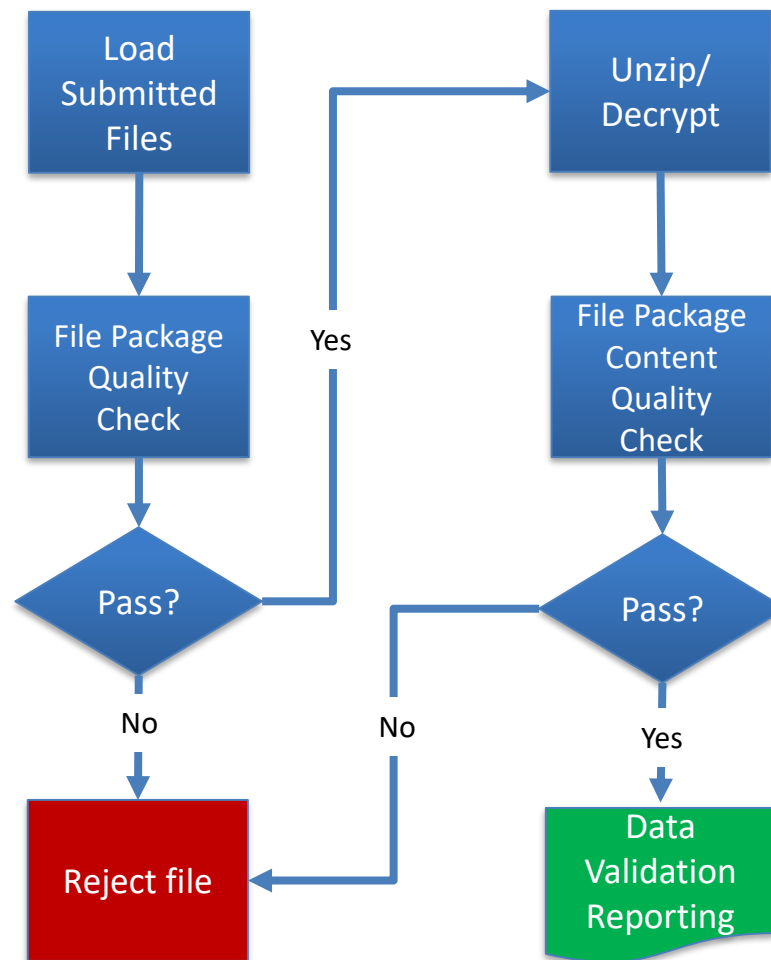
# Data Quality Process & Validation Reporting

# APCD Data Intake Quality Checks

The Arkansas APCD data intake process pulls zipped/encrypted data files from the APCD SFTP site and loads them to the APCD Landing Zone.

After the files are located on the Arkansas APCD infrastructure, the file name structure is verified and ZIP file package contents are verified.

If the Quality Check (File Package or File Package Content) does not pass, reject the file and ask SE to address issues and resubmit.



If the File Package Quality check passes, unzip and decrypt the file. Detached signature files are NO longer required.

Decrypted file is examined for data format issues, header/trailer record information compliance, column count, row count, and data file type accuracy.

If the File Package Content Quality Check passes, the unzipped, decrypted file is sent to data validation reporting.

# Data Validation Levels

- Submitted data is evaluated through two data validation levels:
  - Level 1: Data Intake Confirmation
    - Filename requirements and contents
    - Encryption and signature-match validation
    - Data file-type check
    - File layouts – header/trailer and control count record checks
    - Record count and column count checks
  - Level 2: Field Level Validation
    - Executed after data file passes Level 1
    - Executes over 5,000 data checks/edits
    - Produces Data Validation Summary, File Analysis Reports and Detail Reports

*Instructions in  
this packet  
focus on  
Level 2 only*

# Data Validation Report Types

- Three data validation reports will be produced for every file submitted:
  - Data Validation Summary Report
    - Provided in Microsoft Excel format
    - Includes data type, length, value, dependency, and threshold results
    - Provides pass/fail indicators at data-element level
    - Provides pass/fail indicators at field level
  - File Analysis Report (FAR) **NEW!**
    - Provided in Microsoft Excel format with the Data Validation Summary Report
    - Includes detailed views of key data element relationships to provide contextual information about the submitted data, e.g. count of Unique Groups (MC006), Unique Contracts (MC008), Member IDs (MC137), etc. per Product Insurance Type (MC003)

# Data Validation Report Types

- Three data validation reports will be produced for every file submitted (cont.)
  - Data Validation Detail Report
    - Provided in a pipe-delimited .dat text file
    - Includes first 1,000 examples of each field data issue (examples not mutually exclusive – a data element can be represented multiple times if more than one issue exists)
    - Includes data element ID and error descriptions

# Data Validation Pass/Fail Criteria

- A submitted file will fail at the file level if any one required data element fails validation
- A data element will fail validation if the criteria for any of the following are not met: data type, data length, data value, data dependency, OR threshold
- Threshold criteria are evaluated after data exception requests are submitted. (Data Exception instructions are in a separate document [here](#).)



# Data Validation Report Delivery

- Validation reports are provided via the web portal
- Packages are created using the same method as submitted files
- Reports are compressed and zipped into one file *instead of two*
- Upon delivery, SE can download and unzip the data validation report package for review

# Data Validation Report Delivery

- Data validation report file naming convention:
  - Summary and File Analysis Reports  
ARAPCD\_99999\_TEST\_20151230\_201511\_01\_01\_ELG\_20160316\_123954\_DV\_Summary.xlsx
  - Detail Reports  
ARAPCD\_99999\_TEST\_20151230\_201511\_01\_01\_ELG\_20160316\_123954\_DV\_Detail.dat

# How to Read Validation Reports

- Identify the failed data elements in the APCD Summary Validation reports (last tab in Excel spreadsheet downloaded from the Arkansas APCD Web Portal)
- Find all rows with the failed data element ID in the Arkansas APCD Detail Validation file
- Address the identified issues in the submitted data and resubmit the data file
- If unable to resolve data quality issues, submit an online exception for review

# Data Validation Summary Report

# Data Validation Summary Report



## Data Validation Summary Report

Entity Code	99999
Payer Name	ACHI Test Entity
File Name	ARAPCD_99999_TEST_20170130_201511_01_01_CLM_20170130_120107.dat
Data Source	Medical Claims Data
Record Count	108779
Coverage Period	11/1/2015 - 11/30/2015
DSG Version	4.1.2015
Environment	Production
FileLogId	6307
FileLogDate	1/30/2017 12:01:15 PM
DV Processed Date	1/30/2017 12:15:38 PM
Data Validation Result	FAIL

Data Element ID	Data Element Name	Data Type Failures	Data Length Failures	Data Value Failures	Dependency Check Failures	Dependency Flag	Failed Dependency Non Empty	Optional Column Flag	Total Records For Calculation	Total Unique Records Failed	Required Threshold	Calculated Threshold	Data Validation Result
MC999	UniqueRowId	0	0	2	0	False	0	Required	108779	2	100.000000	99.998161	Fail
MC001	Submitter	0	0	0	0	False	0	Required	108779	0	100.000000	100.000000	Pass
MC002	NationalPlanId	108779	108779	0	0	False	0	Optional	108779	108779	0.000000	0.000000	Pass
MC003	InsuranceType/ProductCode	0	0	0	0	False	0	Required	108779	0	98.000000	100.000000	Pass
MC004	PayerClaimControlNumber	0	0	0	0	False	0	Required	108779	0	99.000000	100.000000	Pass

# Data Validation Summary

## Report Header Definitions

Header Field	Definition
Entity Code	Code assigned by Arkansas APCD, representing the submitting entity
Payer Name	Name of the submitting entity
File Name	Name of submitted file represented in the Data Validation reporting
Data Source	Submitted File Category Values: <div> <div>Member Eligibility Data</div> <div>Medical Claims Data</div> <div>Pharmacy Claims Data</div> </div> <div> <div>Dental Claims Data</div> <div>Provider Data</div> </div>
Record Count	Count of data detail (DD) records on the file, not including headers and trailers
DSG Version	Current DSG version used for validation
FileLogID	Internal flag representing submission
FileLogDate	Date data file was picked up from SFTP site
DV Processed Date	Date data validation was complete
Data Validation Result	Overall data validation result

# Data Validation Summary Report Definitions

Report Field	Definition
Data Element ID	Identifying number from Arkansas APCD Data Submission Guide (DSG) representing the data element
Data Element ID Name	Name/high-level descriptor of data element from Arkansas APCD DSG
Data Type Failures	Number of rows failing because the data element was not in the correct data type required in the Arkansas APCD DSG (first 1,000 failures will be in the detail report)
Data Length Failures	Number of rows failing because the data element did not have the length required in the Arkansas APCD DSG (first 1,000 failures will be in the detail report)
Data Value Failures	Number of rows failing because the data element did not have the data values required in the Arkansas APCD DSG (first 1,000 failures will be in the detail report)
Dependency Check Failures	Number of rows that did not meet the dependency, but does not qualify as an error because the dependency rule does not apply; these rows are not considered in the calculated threshold
Dependency Flag	<p>Indicates if a dependency is required for the data element <i>Note: Check DSG for dependency requirements</i></p> <p>Values:</p> <ul style="list-style-type: none"><li>TRUE – a dependency is required</li><li>FALSE – no dependency is required</li></ul>

# Data Validation Summary

## Report Definitions, Continued

Report Field	Definition
Failed Dependency Non Empty	Values should not be present for a data element if the dependency criteria is not met; this quantity represents the unique number of records that did not meet the defined dependency but contained values (the calculated threshold will be 0%)
Optional Column Flag	Indicates if the data element was optional or required Values: Required – field is required Optional – field is optional
Total Records for Calculation	Total number of records used to calculate the pass/fail threshold
Total Unique Records Failed	Total number of records failing validation
Required Threshold	Indicates data coverage threshold required in Arkansas APCD DSG and after exceptions; optional fields are measured but cannot cause the file to fail
Calculated Threshold	Indicates data coverage threshold found in the data element based on the following algorithm: $(\text{Total Records for Calculation} - \text{Total Unique Records Failed}) / (\text{Total Records for Calculation})$
Data Validation Results	Indicates if data element passed or failed data validation; only required data elements affect file-level result  Values: PASS FAIL



# File Analysis Report

# File Analysis Report

- The *new* File Analysis Report (FAR) is produced with each Data Validation Summary Report. It is included in the Excel spreadsheet download.
- Each File Type (ELG, CLM, PHM, DNT, PRV) has its own detailed information within the report based on the data submitted.

# File Analysis Report Categories – Member Data

- Member Relationship To Subscriber (ME012)
- Member/Subscriber Unique Counts
- Race and Ethnicity Counts to Member IDs and APCD Unique IDs
- Product Insurance Type (ME003) by key data elements, e.g. contract numbers, coverage types, coverage levels
- Gender Distribution
- Enrolled and Activity Questions, e.g. enrollment and disenrollment to active date relationships
- Context Questions, e.g. unclosed segments for deceased members, group name to employer name differences, covered lives counts related to member/subscriber ids, etc.
- Possible Default Dates

# File Analysis Report Categories – Medical Claims

- Product Insurance Type (MC003) by Claim Lines, Contract Numbers, Group Numbers, NPI with Member and Subscriber Count
- Member Counts by Gender
- Type of Claim Counts
- Facility Type Counts
- Member Relationship to Subscriber
- Paid Date by Claim Line Type
- Service From Date by Claim Line Type
- Misc Unique Counts (representing individuals), e.g. Members, Subscribers, Claims, NPIs, etc.
- Possible Default Dates

# File Analysis Report Categories – Pharmacy Claims

- Product Insurance Type (PC003) by Claim Lines, Contract Numbers, Group Numbers, Prescriptions, NPIs with Member and Subscriber Count
- Member Counts by Gender
- Member Relationship to Subscriber
- Paid Date by Claim Line Type
- Fill Date by Claim Line Type
- Misc Unique Counts (representing individuals), e.g. Members, Subscribers, Claims, NPIs, etc.
- Amount Counts (other flags)
- Possible Default Dates

# File Analysis Report Categories – Dental Claims

- Product Insurance Type (DC003) by Claim Lines, Contract Numbers, Group Numbers, NPIs with Member and Subscriber Count
- Member Counts by Gender
- Member Relationship to Subscriber
- Paid Date by Claim Line Type
- Service Date by Claim Line Type
- Facility by Person and Non-Person NPI
- Misc Unique Counts (representing individuals), e.g. Members, Subscribers, Claims, NPIs, etc.
- Possible Default Dates

# File Analysis Report Categories – Provider Data

- Provider Type by Entity Type
- Misc Unique Counts, e.g. Specialty codes, DEA numbers, License Numbers, etc.
- Context Questions
- Possible Default Dates

# Data Validation Detail Report



# Data Validation Detail Report: Example

## Detail Report Content Example Exported into Excel

recKey	RowNumber	EntityCode	PayerName	DataSource	FileName	DataElementID	DataElementName	DataValue	FailedCheck
1	1	99999	ACHI Test Entity	Member Eligibility Data	ARAPCD_99999_TEST_20151230_201511_01_01_ELG.dat	ME002	NationalPlanId		Optional Column Failed DataLength Validation Check. Maximum Field Length is 30 characters.
2	2	99999	ACHI Test Entity	Member Eligibility Data	ARAPCD_99999_TEST_20151230_201511_01_01_ELG.dat	ME012	IndividualRelationshipCode	02	REQUIRED Column Failed DataValue Validation Check. The expected DataValue was not found in the Lookup Reference.
3	3	99999	ACHI Test Entity	Member Eligibility Data	ARAPCD_99999_TEST_20151230_201511_01_01_ELG.dat	ME017	MemberZipCode	720320001	REQUIRED Column Failed DataLength Validation Check. Required Fixed Field Length is 5 characters.

## Provided Format - Pipe Delimited .dat File

```

recKey|RowNumber|EntityCode|PayerName|DataSource|FileName|DataElementID|DataElementName|DataValue|FailedCheck|DateTimeStamp
1|1|99999|ACHI Test Entity|Member Eligibility Data|ARAPCD_99999_TEST_20151230_201511_01_01_ELG.dat|ME002|NationalPlanId||Optional Column
Failed DataLength Validation Check. Maximum Field Length is 30 characters.|3/9/2016 9:30
2|2|99999|ACHI Test Entity|Member Eligibility
Data|ARAPCD_99999_TEST_20151230_201511_01_01_ELG.dat|ME012|IndividualRelationshipCode|02|REQUIRED Column Failed DataValue Validation Check.
The expected DataValue was not found in the Lookup Reference.|3/9/2016 9:30
3|3|99999|ACHI Test Entity|Member Eligibility Data|ARAPCD_99999_TEST_20151230_201511_01_01_ELG.dat|ME017|MemberZipCode|720320001|REQUIRED
Column Failed DataLength Validation Check. Required Fixed Field Length is 5 characters.|3/9/2016 9:30

```

*Note: Only the first 1,000 values of a failed check will be contained in the detail report. The submitter is expected to examine the full submitted file for all data elements.*

# Data Validation Detail Report: Definitions

Report Field	Definition
recKey	Row number of Data Validation Detail Report file
EntityCode	Code assigned by Arkansas APCD representing the submitting entity
PayerName	Submitting entity name
DataSource	Submitted file category Values: Member Eligibility Data      Dental Claims Data Medical Claims Data          Provider Data Pharmacy Claims Data
FileName	Name of submitted file
DataElementID	Identifier from the Arkansas APCD Data Submission Guide (DSG) representing the data element
DataElementName	Name/high-level descriptor of data element from Arkansas APCD DSG
DataValue	Data element value failing data validation check
FailedCheck	Data validation check description
DateTimeStamp	Date and time validation report was processed

# Web Portal File Retrieval

# APCD Website Homepage



## Arkansas All-Payer Claims Database

  
With support from the  
[Arkansas Insurance Department](#)  
[Health Insurance Rate Review Division](#)

[Home](#)[Reports & Maps](#)[Resources](#)[Governance](#)[Web Portal](#)[About the APCD](#)

## Welcome to the Arkansas All-Payer Claims Database (APCD)

There is a growing demand and need for transparency of healthcare information in Arkansas to promote high-value care and advance research. Consumers, employers, and policymakers are advocating for greater reporting on the prices of healthcare services as a way to encourage consumers to choose low-cost, high-quality providers and to promote competition based on value. The [Arkansas All-Payer Claims Database \(APCD\)](#) is a dynamic tool that will enable the state to further its transparency objectives by collecting healthcare data from public and private sources and empowering Arkansans with information to better understand how and where healthcare is being delivered and how much is being spent. Please see the “How to Use the APCD Website” box below to learn how to navigate the Arkansas APCD website.

# User Name and Password



Arkansas All-Payer Claims Database

  
With support from the  
[Arkansas Insurance Department](#)  
[Health Insurance Rate Review Division](#)

[Home](#)

[Reports & Maps](#)

[Resources](#)

[Governance](#)

[Web Portal](#)

[About the APCD](#)

Search this website

[Search](#)

[Home](#) / [Web Portal](#)

## Web Portal: Submitting Entity and Data Requester Access

The Arkansas All-Payer Claims Database (APCD) Web Portal provides authorized, secure access for data submission and data release.

### Signing up for a Web Portal Account

To request an account, please contact [APCD Technical Support](#).

To submit an online technical support question, please [fill out our online contact form](#), and our technical support team will respond to your question within 2 business days.

### Log into the Web Portal

User Name:

Password:

[Log In](#)

Forgot your password? [Click here](#)

© 2025 Arkansas Center for Health Improvement (ACHI), 1401 West Capitol Avenue, Suite 300, Little Rock, AR 72201

Email [Arkansas APCD Support](#) | 501-526-2244 (phone) | 501-526-2252 (fax)

[Contact Us](#) | [Terms of Use](#) | [Privacy Policy](#)

# Web Portal Dashboard

- Upon logging into the Web Portal, users will be directed to the Web Portal dashboard. From this page, users may access the following tabs:
  - Upload Files
  - Retrieve Files
  - Account History
  - Data Exceptions
  - Technical Support

# Web Portal Setup: Account Overview



Arkansas All-Payer Claims Database

**ACHI**  
With support from the  
[Arkansas Insurance Department](#)  
[Health Insurance Rate Review Division](#)

[Home](#) [Reports & Maps](#) [Resources](#) [Governance](#) **[Web Portal](#)** [About the APCD](#)

Search this website [Search](#)

[Home](#) / [Web Portal](#) / Web Portal Dashboard

## Web Portal: Dashboard

Welcome to the Arkansas All-Payer Claims Database (APCD) Web Portal Dashboard! [Click here](#) to log out.

### Account Notifications

You have 3 files that are now available for download that have not yet been downloaded. These files will be available until 1/2/2026. Please download these files as soon as possible by visiting the [Retrieve Files](#) tab.

[Upload Files](#) [Retrieve Files](#) [Account History](#) [Data Exceptions](#) [Technical Support](#)

If you have new .ZIP files to upload on behalf of your organization, please add them here, and then click the 'Upload File(s)' button. Note that ONLY .ZIP files will be accepted.

Please choose which .ZIP files you'd like to upload:

[Select](#)

[Upload File\(s\)](#)

### Account Overview

#### Organization

ACHI Test Entity

#### Entity Code

99999

#### Account Type

Submitter

#### Contact Email

#### Contact Phone

# Web Portal Setup: Account Overview

- Under Account Overview on the left side of every page, users will be able to see the following entity-specific information:
  - Organization: Submitting Entity (SE) (*not the Payer Code*)
  - Entity Code: 5-6 digit alphanumeric code assigned at registration
  - Account Type: Submitter
  - Contact Email: Email of record for SE
  - Contact Phone: Phone number of record for SE



# Web Portal Setup: Retrieve Files

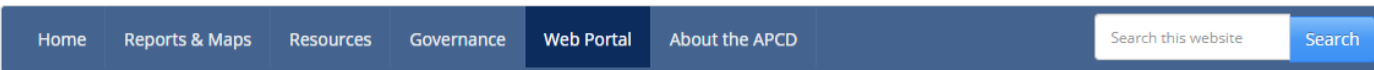
- Under the Retrieve Files tab, users will be able to view the list of files produced by the APCD and download:
  - Data Validation Summary Reports/File Analysis Reports
  - Data Validation Detail Reports
  - Other files uploaded from APCD to the SE

# Web Portal Setup: Retrieve Files



Arkansas All-Payer Claims Database

  
With support from the  
Arkansas Insurance Department  
Health Insurance Rate Review Division



[Home](#) / [Web Portal](#) / Web Portal Dashboard

## Web Portal: Dashboard

Welcome to the Arkansas All-Payer Claims Database (APCD) Web Portal Dashboard! [Click here](#) to log out.

### Account Notifications

You have 3 files that are now available for download that have not yet been downloaded. These files will be available until 1/2/2026. Please download these files as soon as possible by visiting the [Retrieve Files](#) tab.

### Account Overview

**Organization**  
ACHI Test Entity  
**Entity Code**  
99999  
**Account Type**  
Submitter

[Upload File](#)

[Retrieve Files](#)

[Account History](#)

[Data Exceptions](#)

[Technical Support](#)

Any files that have been prepared for you by the Arkansas APCD will be available for you to retrieve here.

Uploaded File	Available Downloads
ARAPCD_99999_PROD_20251208_202509_01_01_PRV_20251230_162109_DV Uploaded on 12/30/2025 <b>Expires on 1/13/2026</b>	<a href="#">Summary File</a> Not downloaded
ARAPCD_99999_PROD_20251212_202509_01_01_PRV_20251219_160607_DV Uploaded on 12/19/2025 <b>Expires on 1/2/2026</b>	<a href="#">Summary File</a> Downloaded on 12/19/2025
ARAPCD_99999_PROD_20251215_202511_01_01_PHM_20251230_160006_DV Uploaded on 12/30/2025 <b>Expires on 1/13/2026</b>	<a href="#">Summary File</a> Not downloaded
ARAPCD_99999_PROD_20251218_202509_01_01_CLM_20251230_160307_DV Uploaded on 12/30/2025	<a href="#">Summary File</a> Not downloaded

# Web Portal Setup: Notifications

- Above Account Overview on the left side of every page, notifications related to the Retrieve Files tab will appear:
  - Count of new files available that have not been downloaded and their latest expiration dates
  - Technical Support contact information changes
  - Technical Support phone number changes
  - Technical Support email address changes
  - APCD web portal changes

# Web Portal Setup: Account History

- Under the Account History tab, users will be able to view detailed information regarding their specific accounts
- Actions listed include:
  - Successful login to the APCD Web Portal
  - Verification of technical support request submission
  - Files successfully uploaded (with filenames)
  - Reports successfully downloaded (with filenames)

# Arkansas APCD Technical Support

- Arkansas APCD Technical Support team can be reached at this email address:  
[support@achiapcd.atlassian.net](mailto:support@achiapcd.atlassian.net)

# Call to Action

- Sign up for ACHI Newsletter
- Follow on social media: ACHI and the Arkansas Healthcare Transparency Initiative featuring the Arkansas APCD



- Check out blog posts on ACHI.net

# SIGN UP FOR WEEKLY UPDATES

Subscribe to ACHI's newsletter for weekly updates and critical insights on emerging and existing health issues

[achi.net/newsletter](https://achi.net/newsletter)

