

DRAFT

# Introduction to the Arkansas All-Payer Claims Database Project (APCD)

**ARKANSAS**



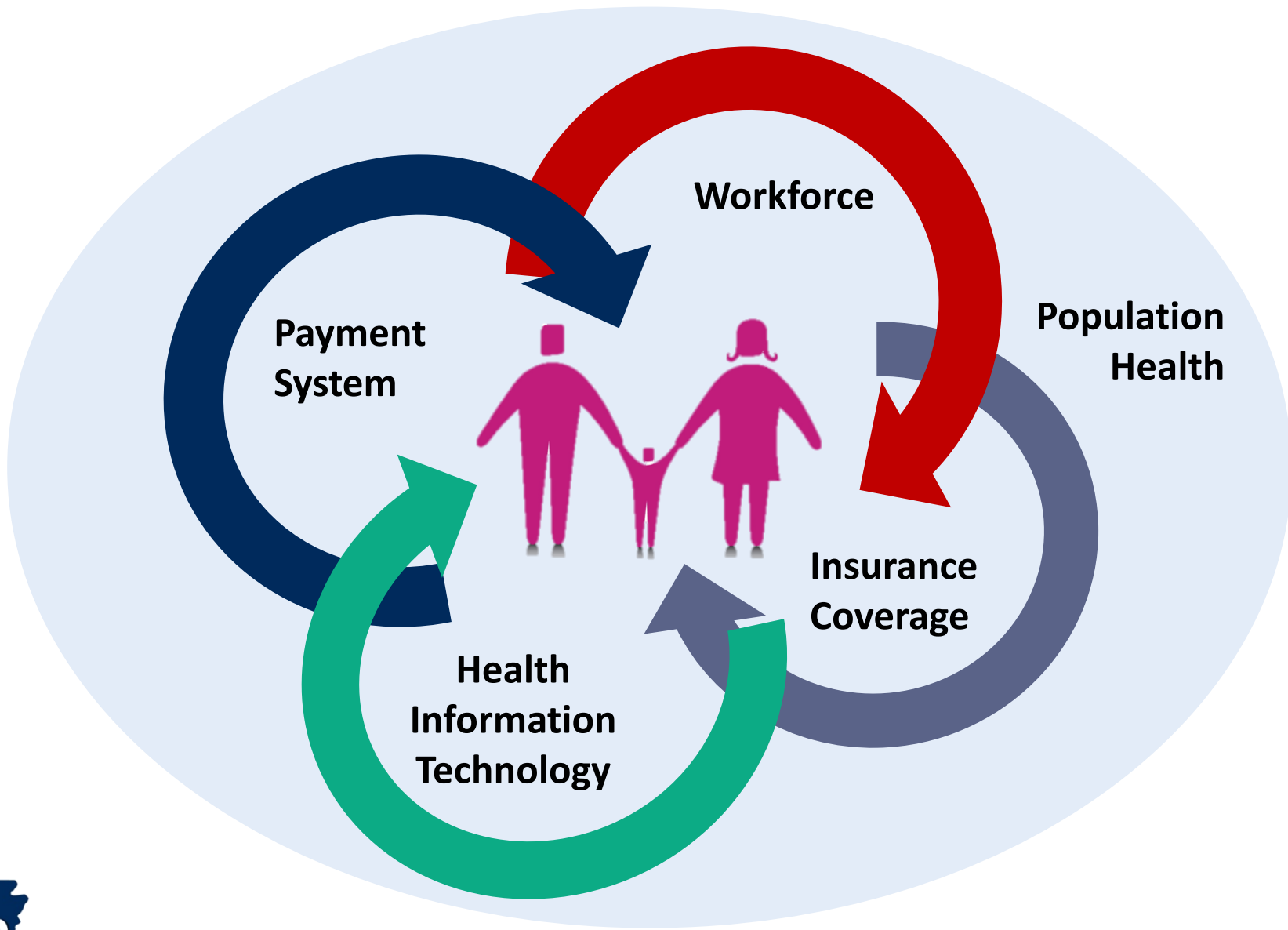
All-Payer Claims  
Database

August 19 and 21, 2014

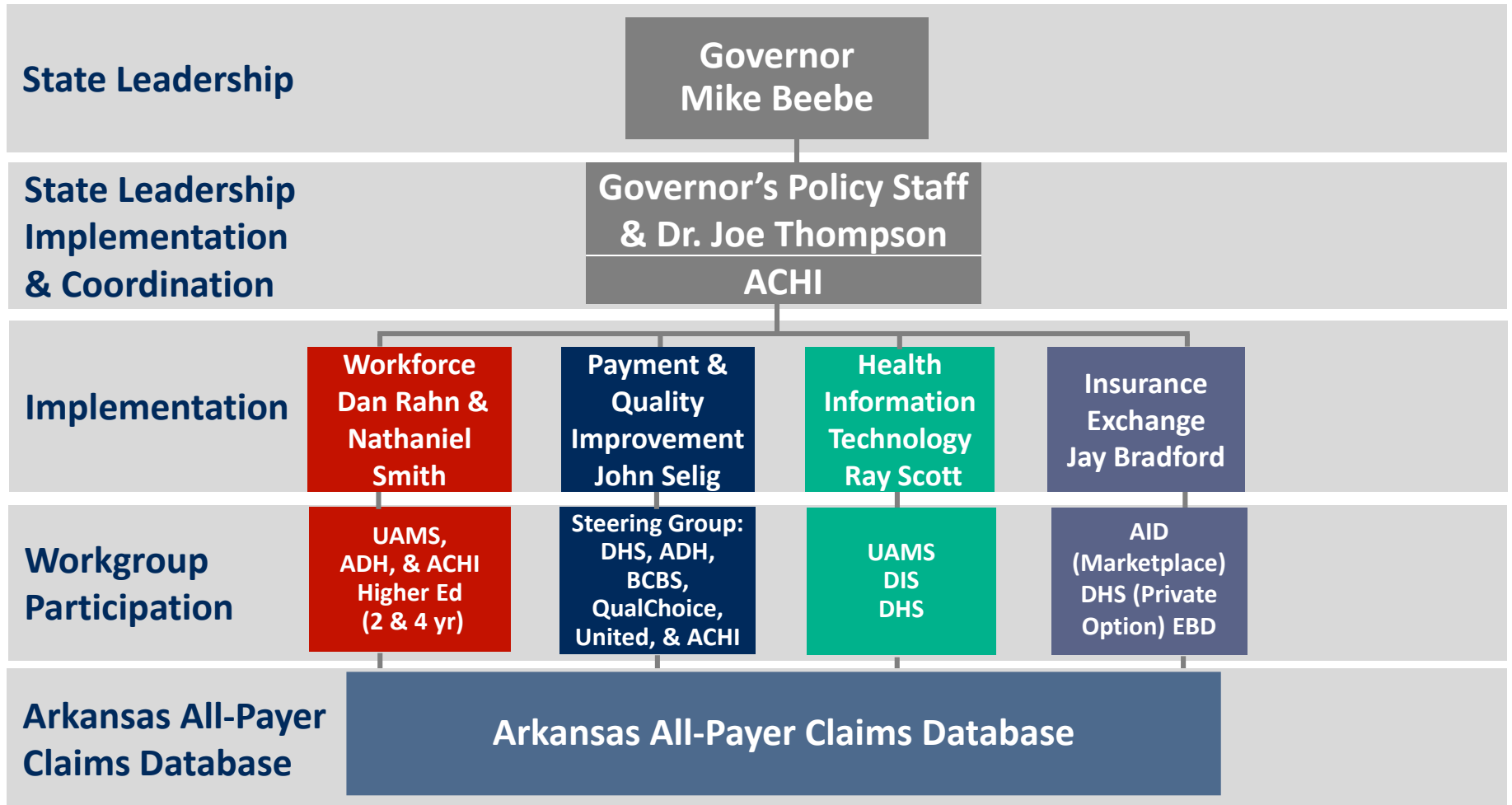
ADMINISTERED BY **ACHI**  
ARKANSAS CENTER FOR HEALTH IMPROVEMENT

DRAFT

# Arkansas System Transformation Strategy



# Arkansas Health System Improvement Organizational Structure



# What is an All-Payer Claims Database (APCD)?

- An APCD is a large-scale database that systematically collects health care data from a variety of payer sources
- Data collected typically include medical, pharmacy, and dental claims with eligibility and provider files
- Some APCDs link with existing data including hospital discharge, immunization, and clinical information

## Benefits of an APCD

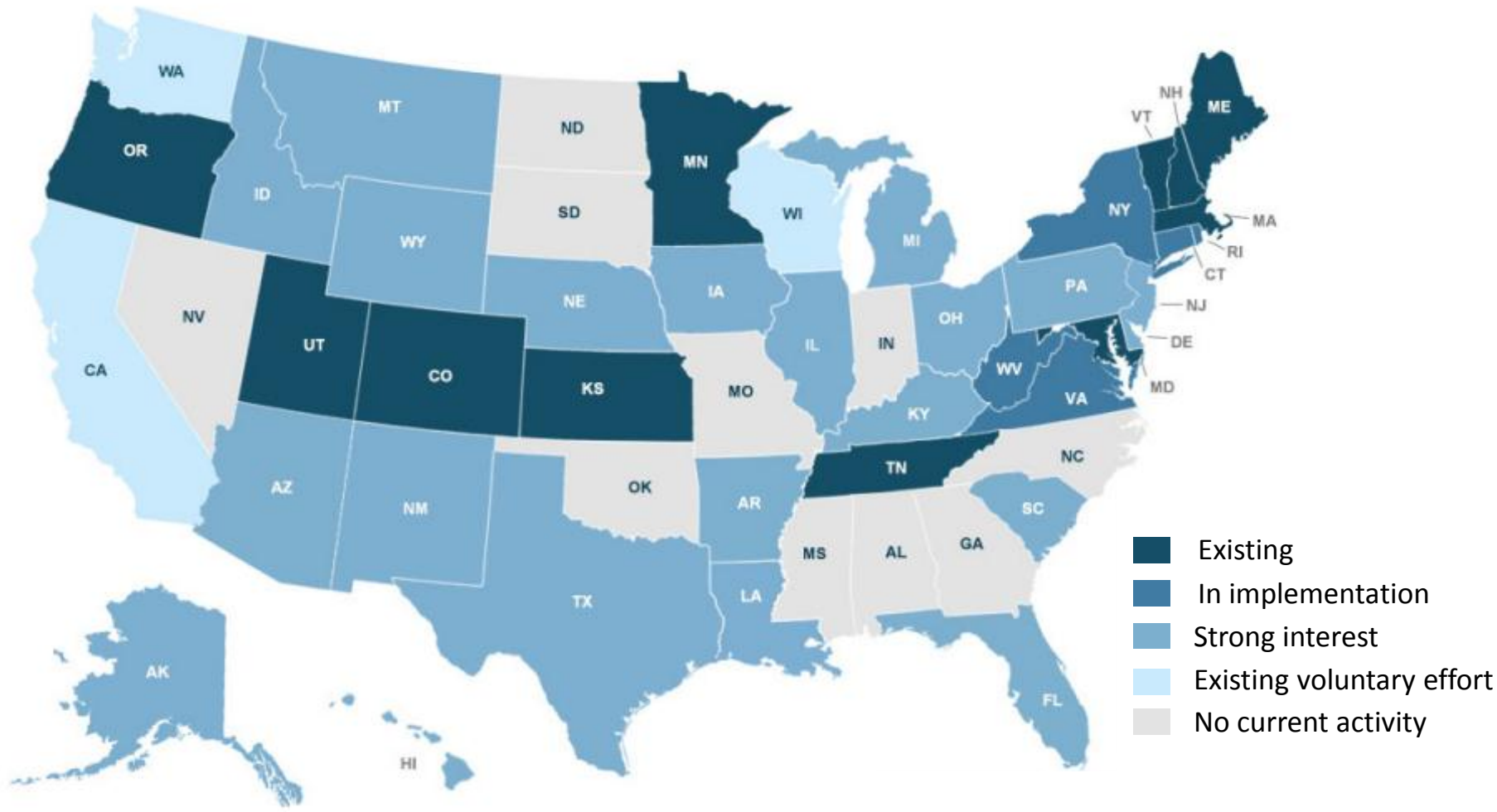
- **Helps consumers make informed decisions about their health care**
- **Supports research and quality improvement initiatives**
- **Allows for peer comparison on performance**
- **Helps target population health initiatives**
- **Used to evaluate reform efforts**
- **Provides access to information for employers to negotiate the purchase of coverage and care**

# APCDs in Other States

- **11 states with active APCDs; several others in implementation**
- **Variation in APCDs**
  - Requirements for submission of data
  - Variables collected
  - Functionality and ability to use data
  - Governance
  - Sustainability models

DRAFT

# State Progress Map



Source: <http://www.apcdouncil.org/state/map>



## APCD Mission Statements

**Massachusetts** – To monitor the Massachusetts health care system and to provide reliable information and meaningful analysis for those seeking to improve health care quality, affordability, access, and outcomes.

**Colorado** – To support, promote and spread strategic initiatives that will improve the health of Coloradans, contain costs and ensure better value for health care received.

**Maryland** – To plan for health system needs, promote informed decision-making, increase accountability, and improve access in a rapidly changing health care environment by providing timely and accurate information on availability, cost, and quality of services to policy makers, purchasers, providers and the public.

**Rhode Island** – To develop a database that can be used to study health care utilization, costs, and trends to inform the consumer, to inform policy decisions, allow for cost comparison, and provide information for researchers studying health care quality in Rhode Island.



# Snapshot of APCDs in Three States

	Colorado	Massachusetts	Wisconsin
<b>Administrator</b>	Independent non-profit	State agency	Independent non-profit
<b>Mandatory</b>	Yes	Yes	No
<b>Collects PHI</b>	Yes	Yes	No
<b>Reporting</b>	Consumer-facing website provides total cost, utilization, access, and population maps/reports by region	Consumer-facing website allows sort by provider group or hospital to display costs and quality measures for various procedures	NA
<b>Sustainability</b>	Grants and data fees	State appropriations and data fees	Grants, membership, and subscription fees

# Colorado

- Passed law in 2010 creating the APCD
- Center for Improving Value in Health Care (CIVHC), an independent, non-profit organization, was appointed the Administrator of the APCD by the Department of Health Care Policy and Finance (HCPF)
- APCD Advisory Committee makes recommendations about development and implementation
- 28 member committee comprised of providers, carriers, researchers, health policy advocates, employers, health information technology, legislators, and consumers
- HCPF adopted rule to require mandatory data submission
- Collects personal identifiers
- Offers limited and controlled release of data to the public
- Currently supported by grants and fees

### Filter the Claims Data:

Select criteria below to filter the data from the APCD.

Type of healthcare metric:

ER Visits

What's this?

Type of payer data:

All Current Payers

What's this?

Show data for:

2009 2010 2011 2012

View by:

County

What's this?

Show metric as:

Actual value % change from previous year

Map | Data Sheet

Click on up to three counties on the Map below, for detailed reporting.

Export

### Counties selected for reports:

No areas selected.

Create Report

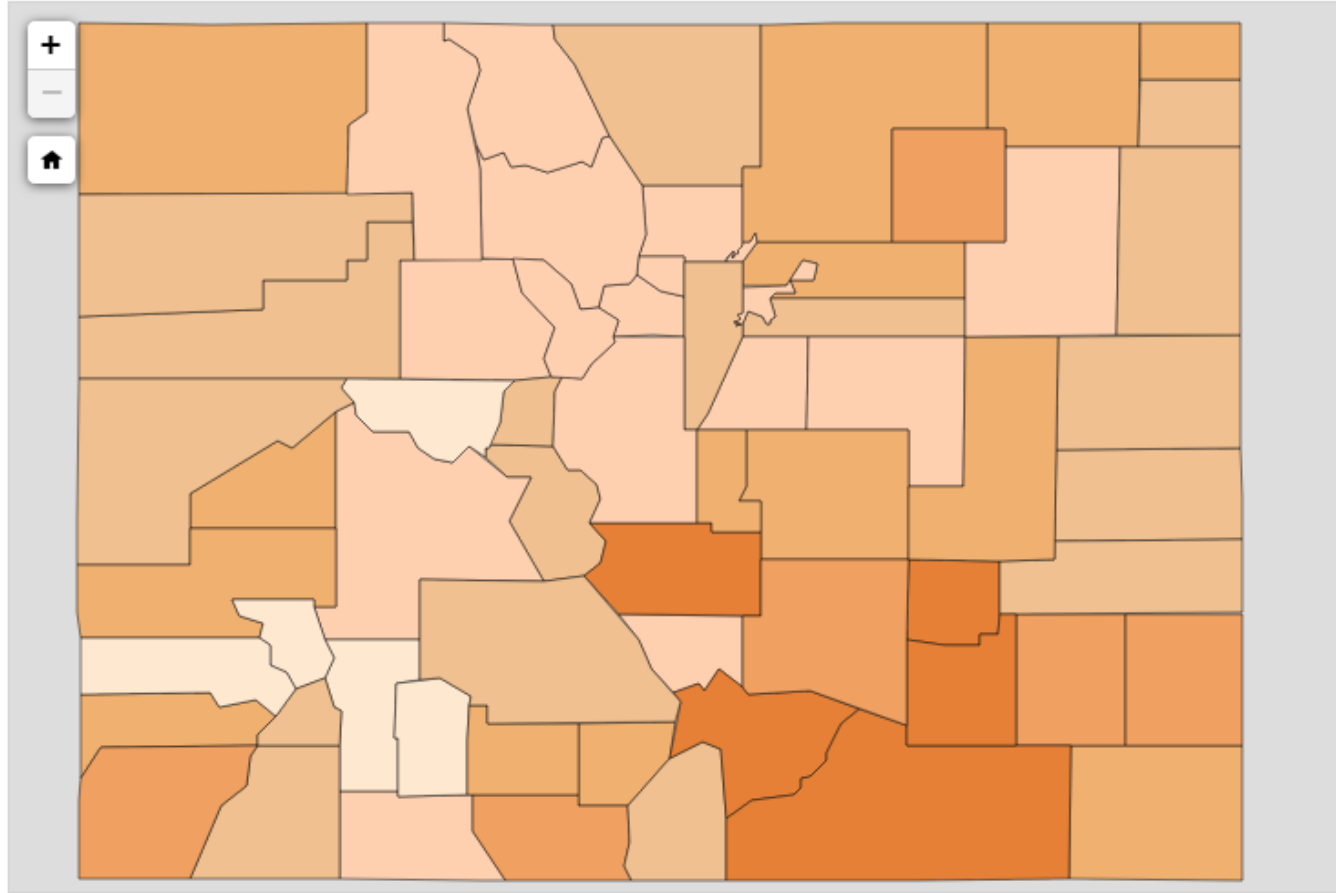
### Help

- All Current Payers Compared to Expected (C2E) Completeness Score (C-score) County ER Visits Index

### Legend

ER Visits Per Thousand Members Per Year

- Less than 100 100 to 200 200 to 300 300 to 400 400 to 500 Greater than 500



# Colorado Health Data

### Filter the Claims Data:

Select criteria below to filter the data from the APCD.

Type of healthcare metric:  
*not applicable for reports*

Type of payer data:  
All Current Payers ▼  
[What's this?](#)

Show data for:  
2009 2010 2011 2012

### Display Results:

Select how you would like the results displayed.

View by:  
County ▼  
[What's this?](#)

Selected Areas :  
Adams  
Alamosa  
Arapahoe  
[modify](#)

**Report** [Download Data](#)

Category:

- [Chronic Conditions](#)
- [Illness Burden](#)
- [Illness Burden Graph](#)

**Report Filters** Condition

### Chronic Conditions

[Export](#)

	Adams		Alamosa		Arapahoe		State
	C3		C2		C3		C2
	1.02		1.20		1.00		1.00
	Value	Index	Value	Index	Value	Index	Value
Total Cost of Care: Diabetes	\$14,867	1.12	\$12,297	0.92	\$12,905	0.97	\$13,316
Total Cost of Care: Population	\$2,631	0.99	\$3,011	1.14	\$2,863	1.08	\$2,647
Disease Prevalence	2.35%	1.17	2.70%	1.35	2.14%	1.07	2.01%
▼ Chronic Dollar Distribution							
Inpatient Facility Cost	28%	1.13	13%	0.54	24%	0.94	25%
Outpatient Facility Cost	23%	1.13	22%	1.06	18%	0.86	21%
ER Facility Cost (subset of Outpatient Cost)	5%	1.30	3%	0.74	5%	1.28	4%
Professional Cost	16%	0.84	28%	1.47	21%	1.14	19%
Ancillary Cost	3%	0.85	4%	1.25	4%	1.09	4%
Rx Cost	29%	0.92	33%	1.02	33%	1.04	32%

# Massachusetts

- **Legislative history**
  - Early efforts began with the 2006 Health Care Reform Law
  - 2008: Division of Health Care Finance and Policy assumed responsibility to collect claims
  - 2010: Regulations became effective to establish the APCD and require mandatory data submission
  - 2012: Law was passed that established the Center for Health Information and Analysis (CHIA), a state agency created to act as information hub for other agencies to promote administrative simplification
- **Collect personal identifiers**
- **Release extracts to a variety of users**
  - Release is determined by who is requesting the data, how will it be used, what data is needed
  - Applications are reviewed by CHIA Data Privacy Committee and Data Release Committee
  - Provider access to the MA APCD
- **Funded by state appropriations and data fees**

# MyHealthCareOptions™



A Health Care Resource Provided by the Commonwealth of Massachusetts Health Care Quality and Cost Council

- For Patients & Families
- About The Ratings
- Frequently Asked Questions
- Resources & Tools
- About Us
- Feedback

## Comparison of Providers

Start New Search

Return to Search Results

Bookmark

### Choose a Topic

#### Patient Safety

- Patient Safety
- Serious Reportable Events
- Surgical Care

#### Patient Experience

- Patient Experience

#### Bone and Joint Care

- Back Procedure
- Hip Fracture
- Hip Replacement
- Knee Replacement

#### Cardiovascular Disease

- Angioplasty
- Bypass Surgery**
- Cardiac Screening Tests
- Heart Attack
- Heart Failure
- Heart Valve Surgery
- Stroke

#### Digestive System

- Gall Bladder
- Intestinal Surgery
- Weight-loss Surgery

### Cardiovascular Disease: Bypass Surgery

Bypass surgery involves transplanting a blood vessel from your leg or chest to the heart to get around (or "bypass") a blockage in the heart's blood supply. [\(more\)](#)

Diagnostic classification: Coronary Bypass with cardiac catheterization (APR-DRG 165); Coronary Bypass only (APR-DRG 166)

	Boston Medical Center	Brigham & Women's Hospital	Massachusetts General Hospital
<div style="display: flex; justify-content: space-around;"> <span>Summarized Report</span> <span>View Detailed Report</span> <span>View Statewide Procedure Costs</span> </div>			
<b>Quality of Care</b> (more)			
<b>Quality Rating</b>	★★	★★	★★
<b>Statistical Significance</b>	Not different from State Average Quality	Not different from State Average Quality	Not different from State Average Quality
<b>Cost of Care</b> (more)			
<b>Cost Rating</b>	\$	\$\$	\$\$\$
<b>Statistical Significance</b>	Below Median State Cost	Not Different from Median State Cost	Above Median State Cost

# Wisconsin

- **Wisconsin Health Information Organization (WHIO) is a non-profit member-based organization that leads a voluntary initiative to collect claims information.**
- **Members include providers, employers, payers, and the state, with a governing board comprised predominately of purchasers.**
- **WHIO collaborates with state agencies to collect claims data on health care cost and quality measures.**
- **The data warehouse uses a snapshot of data to identify gaps in care for treatment of chronic conditions and provide data about the costs per episode of care, population health, preventable hospital readmissions, and variations in prescribing generic drugs.**
- **Members (data submitters) and subscribers (data users) are provided equal access to the de-identified data for analyses.**
- **Funded by grants and membership and subscription fees. WHIO will also receive funding from a workforce initiative.**

- Home
- About The Ratings
- FAQ
- Consumer Resources
- Health Plans
- About Us
- Contact Us

[CLICK HERE TO SEE THE RATING CRITERIA](#)

LOCATION: 54601 DISTANCE: 5 MILES

Family Medicine		Internal Medicine		Pediatrics		Above <input checked="" type="checkbox"/> Average <input checked="" type="checkbox"/> Below <input checked="" type="checkbox"/>			
Clinic	City	Provides the Recommended Care for Your Healthcare Issue at the Right Time			Makes Good Use of Your Healthcare Dollars			*Not Rated	
		Above	Average	Below	Above	Average	Below		
FRANCISCAN HEALTHCARE INTERNAL MEDICINE DEPARTMENT	LA CROSSE	<input checked="" type="checkbox"/>					<input checked="" type="checkbox"/>		
GUNDERSEN HEALTH SYSTEM	LA CROSSE			<input checked="" type="checkbox"/>	<input checked="" type="checkbox"/>				
CENTER FOR WOMENS HEALTH AT FRANCISCAN SKEMP	LA CROSSE							<input checked="" type="checkbox"/>	
FRANCISCAN HEALTHCARE OCCUPATIONAL HEALTH DEPARTMENT	LA CROSSE							<input checked="" type="checkbox"/>	
RIVER VALLEY CLINIC - VAMC	LA CROSSE							<input checked="" type="checkbox"/>	

\*NOT RATED COLUMN: INDICATES THAT THIS CLINIC HAS FEWER THAN 3 PHYSICIANS AND/OR DOES NOT HAVE ENOUGH INFORMATION ON PATIENT CARE TO BE RATED BY OUR SYSTEM.

Date Time Period: 04/01/12 to 03/31/13



# Arkansas APCD Award

**Arkansas Insurance Department (AID) Health Insurance Rate Review Division (HIRRD) received Cycle III grant funding from Center for Consumer Information and Insurance Oversight (CCIIO) to “Support Health Insurance Rate Review and Increase Transparency in Health Care Pricing.”**

- **\$1.7 million over 18 months to establish an APCD**
- **RFP awarded to ACHI March 2014**
- **Contract authorized June 2014**

# Arkansas APCD Goals and Objectives

- Support efforts to improve health care quality
- Provide increased transparency in health care spending and utilization
- Help consumers make informed health care purchases
- Serve as a public good
- Research

# APCD Deliverables

- Stakeholder engagement process
- Integrated multi-payer data warehouse
- Analytical data marts for rate review and health care cost transparency
- Integration of SHARE Master Provider/Patient Index Utilization
- Consumer-facing website

## Anticipated APCD Reports

- **Version 1.0 Reports**
  - Population-based cost and utilization reports by geographic area
  - Average or median cost per type of procedure
- **Version 1.5 Reports**
  - Data extracts to experienced researchers who may serve as “beta testers” of data quality
  - Risk-adjusted population costs
  - Refresh Version 1.0 Report

# Anticipated APCD Reports

- **Version 2.0 Reports**
  - Data extracts that address researchers' projects and state agency data analytic needs
- **Version 2.5 Reports**
  - Provider level cost and quality reporting
  - Reports that provide assistance in choosing high-value, high-quality care



All-Payer Claims Database

Administered by




[Home](#)

[Reports](#)

[Maps](#)

[Resources](#)

[Web Portal](#)

[About ACHI](#)

## Welcome

Our current health care system is costly and doesn't always provide the best results. Many potential solutions exist, but one theme emerges consistently: improving the system starts with better information. The Arkansas All Payer Claims Database (APCD) has been developed to provide easily accessible and usable health system information. This website securely compiles claims data from private and public health insurance payers to provide the most comprehensive picture of costs and service use in the state.

## What's New

*[This section will change with each APCD update, listing new features and data.]*

## How to Use the APCD

The APCD provides transparent data intended to support improving health, health care quality and containing costs.

- Visit the [Reports](#) and [Maps](#) tabs to view a variety of health care and service evaluations *[tbd]*.
- Visit the [Resources](#) tab for data release forms and protocols, definitions and detailed instructions on the use of this site.
- Visit the [Portal](#) tab to upload or download approved analytic data sets.

## Most Popular Selections

The top searches are highlighted below. Make your selection here or at the links above.

Choose one of the following:

- Procedure Charges
- Report 2
- Report 3
- Report 4

[Report Description](#)

[Procedure Charges](#)

*The Procedure charges report displays the average charge for selected procedures by Arkansas region. Procedures available for look-up are those used in the Arkansas Episodes of Care.*

## Current Data in the APCD

The Arkansas APCD currently includes claims data from the largest commercial payers' individual and large-group fully-insured lines of business, plus Medicaid and Medicare, representing over 2.5 million Arkansans. [Click here](#) to view update and enhancement timeline.

### Data Release

[Click here](#) to review data release protocols and submit data release request forms.

### Web Portal

[Click here](#) to download source data or upload analytic data sets. Available to approved data submitters and analysts.



# Arkansas All-Payer Claims Database

DRAFT

Administered by  ARKANSAS CENTER FOR HEALTH IMPROVEMENT

All-Payer Claims Database

[Home](#)

[Reports](#)

[Maps](#)

[Resources](#)

[Web Portal](#)

[About ACHI](#)

## Display Results

Select Carrier:

- Private Carriers
- Medicaid
- Medicare
- All Carriers

Select Region

Don't know your region?

Select your County and

regional results will be displayed.

## Average Charge for Procedures by Region

Select Procedure

What you can expect to pay

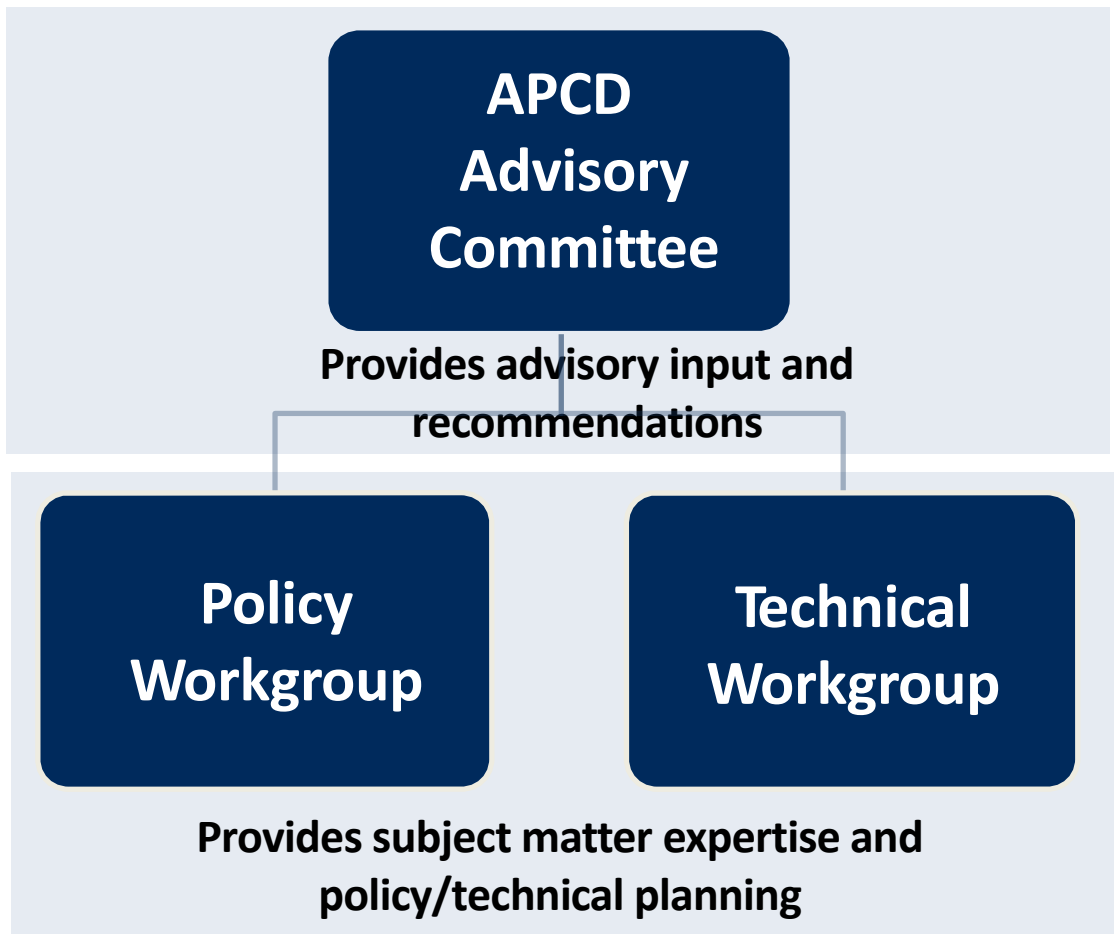
Range of charges in Region

Number of Procedures per year

The average cost per procedure is calculated by finding the total paid by insurance and patient for all qualifying events divided by the number of qualifying events. The most recent 24 months of data is used to calculate average cost.

*[additional disclaimers and/or link to references supporting calculations]*

# APCD Stakeholder Map





## Needed Input from Stakeholders

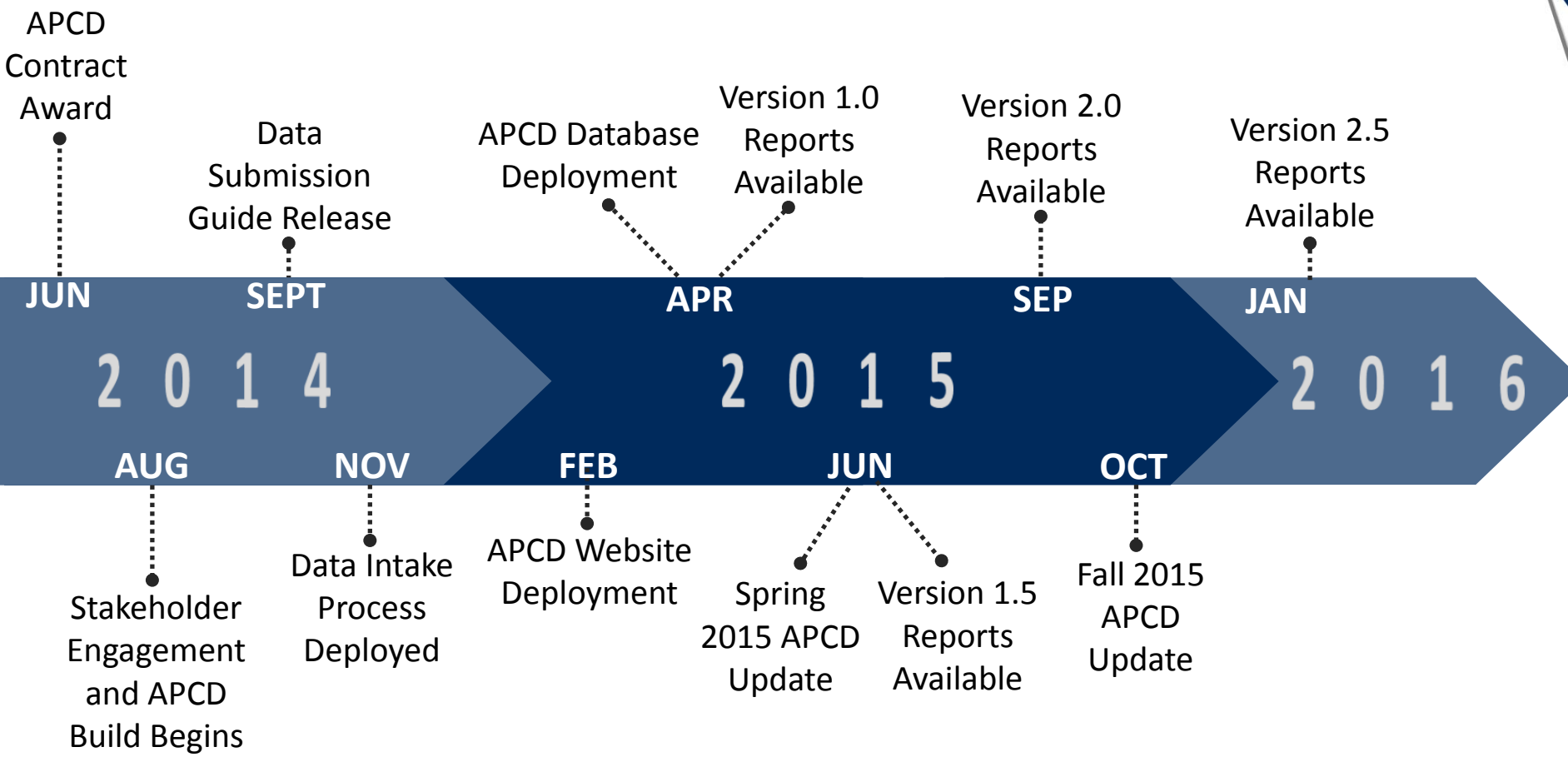
- **Mission statement development**
- **Data submission parameters and format**
- **Data release requirements and reporting**
- **Web-based applications for consumer and researcher use**
- **Education about the APCD/Communication strategy**
- **Governance structure**
- **Sustainability model**

DRAFT

# Status Update



# Arkansas APCD Schedule



## Next Steps

- **APCD Workgroups**
- **Monthly meeting**
  - **Policy workgroup: September 9, 3:30 – 5:00p.m.**
  - **Technical workgroup: September 12, 3:30 – 5:00p.m.**
- **Designate representative and provide contact information**

# Next Steps

Policy Workgroup	Technical Workgroup
Governance	Privacy/Security
Data Use	Analytics/Reporting
Data Release	Data Management
Oversight	Claims Data Subject Matter Experts
Recruitment	

## Next Steps

- **APCD Advisory Committee**
  - Monthly meetings
  - Tentative date: September 29, 3:30 – 5:00p.m.
- **Best Practices Summary**
- **Survey and Responses**

DRAFT

# Comments and Questions